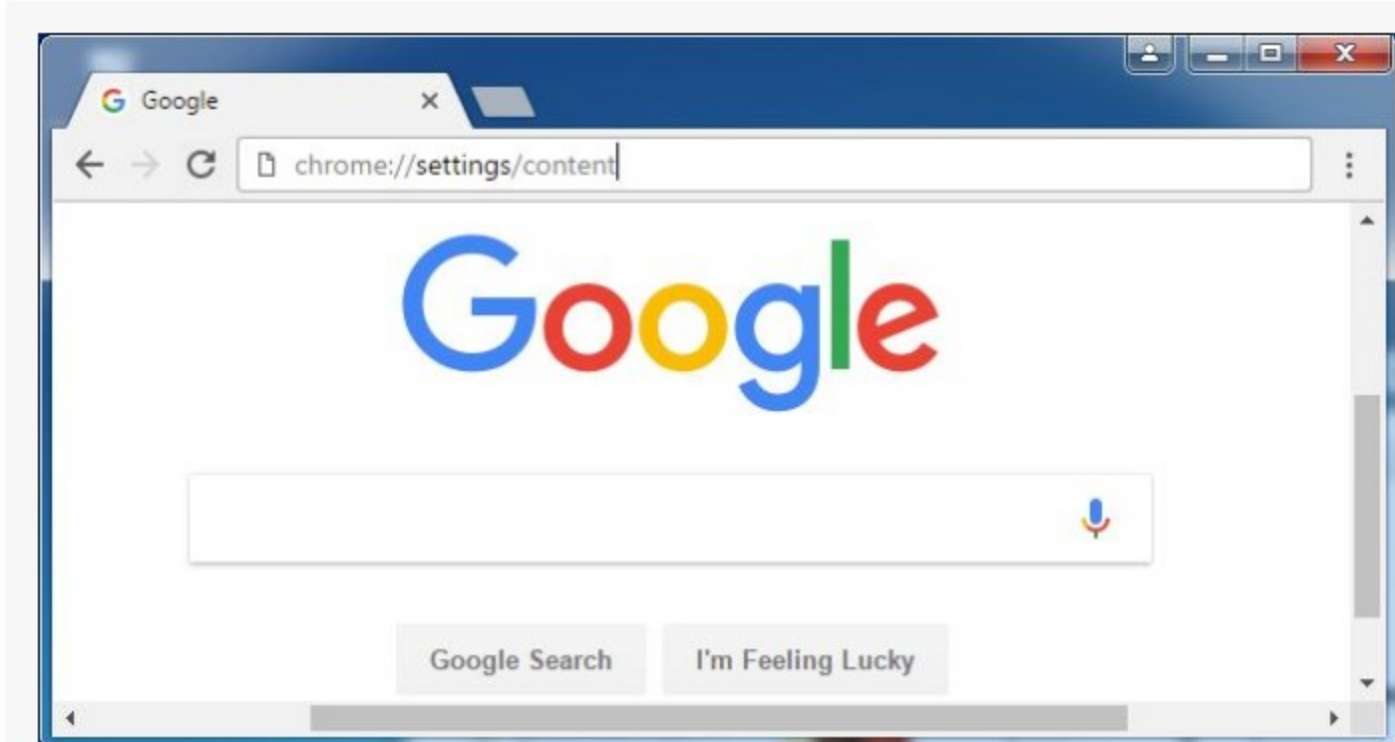


Enable Adobe Flash Player for use in the Google Chrome web browser.

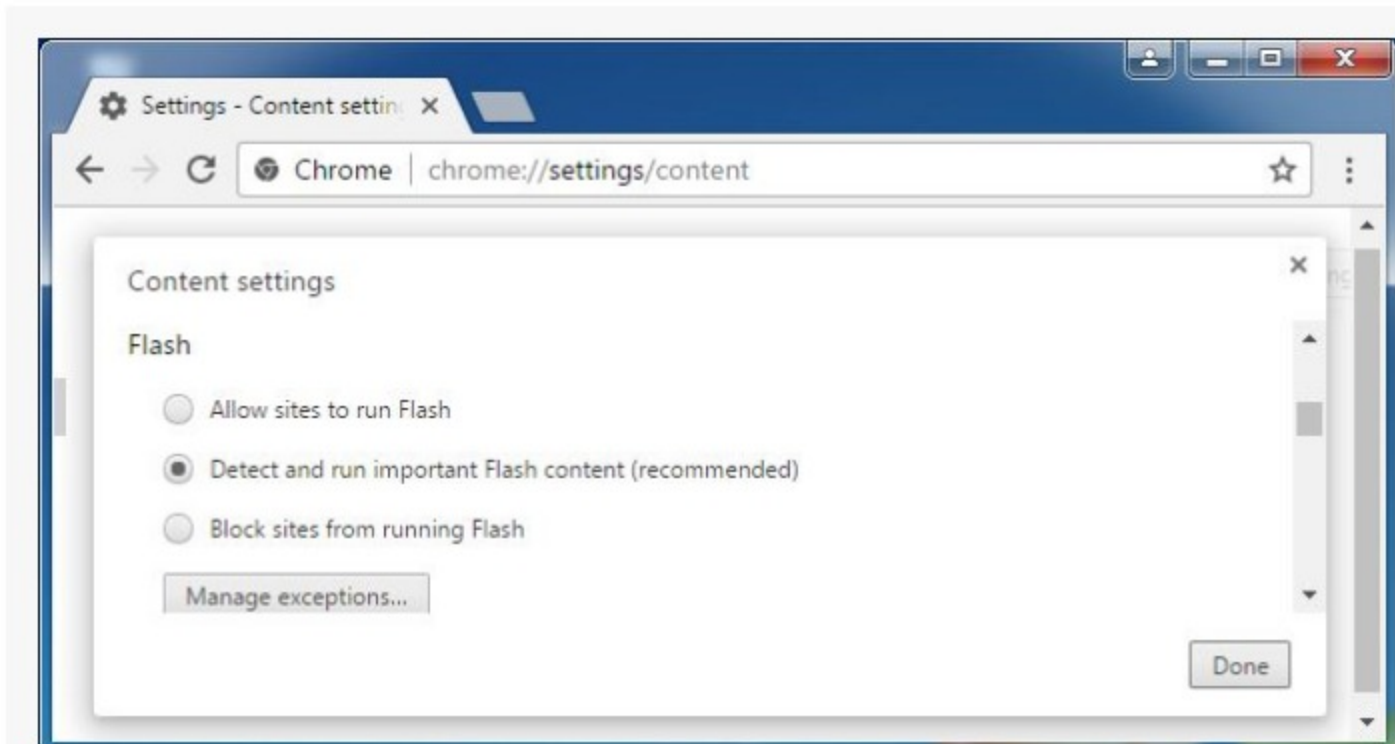
Windows

1 In the address bar, type **chrome://settings/content**.



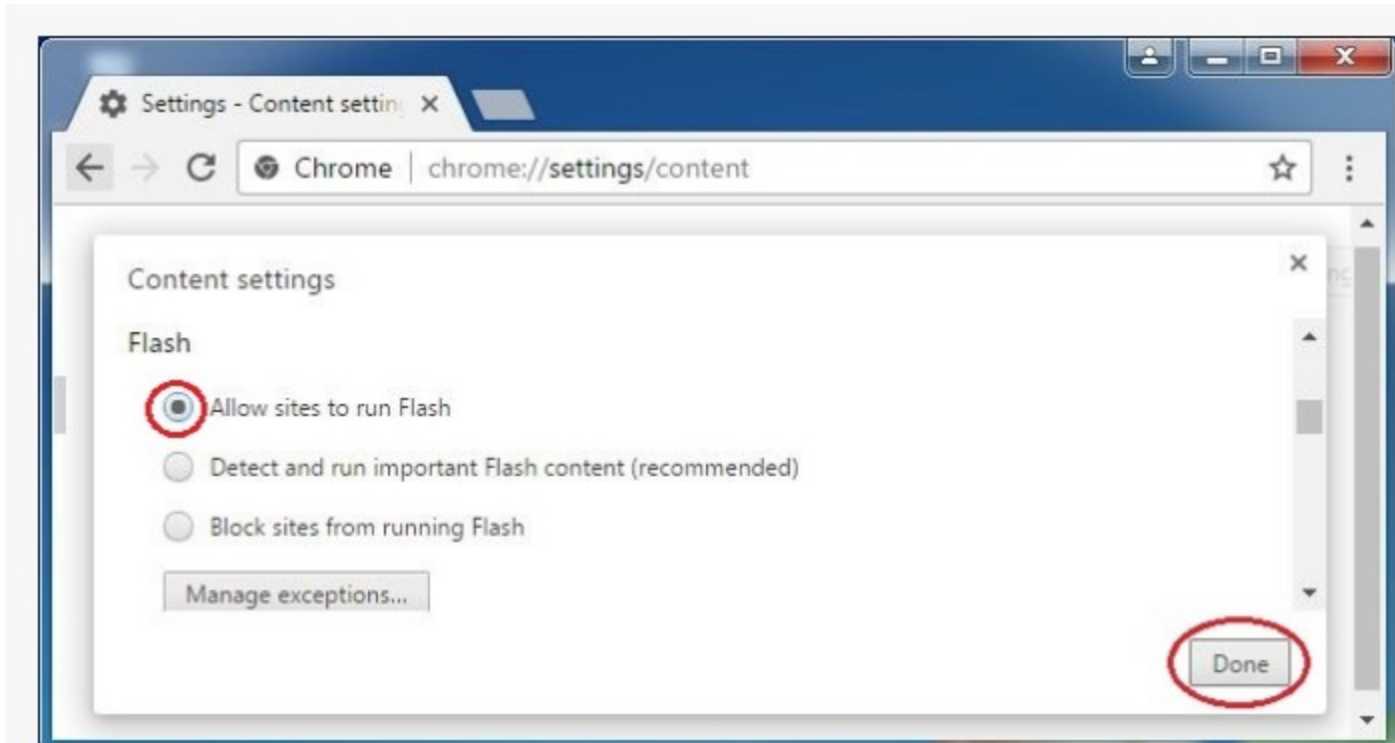
Type **chrome://settings/content** in the address bar

2 On the **Content settings** screen, find the Flash Player listing. Check the status.



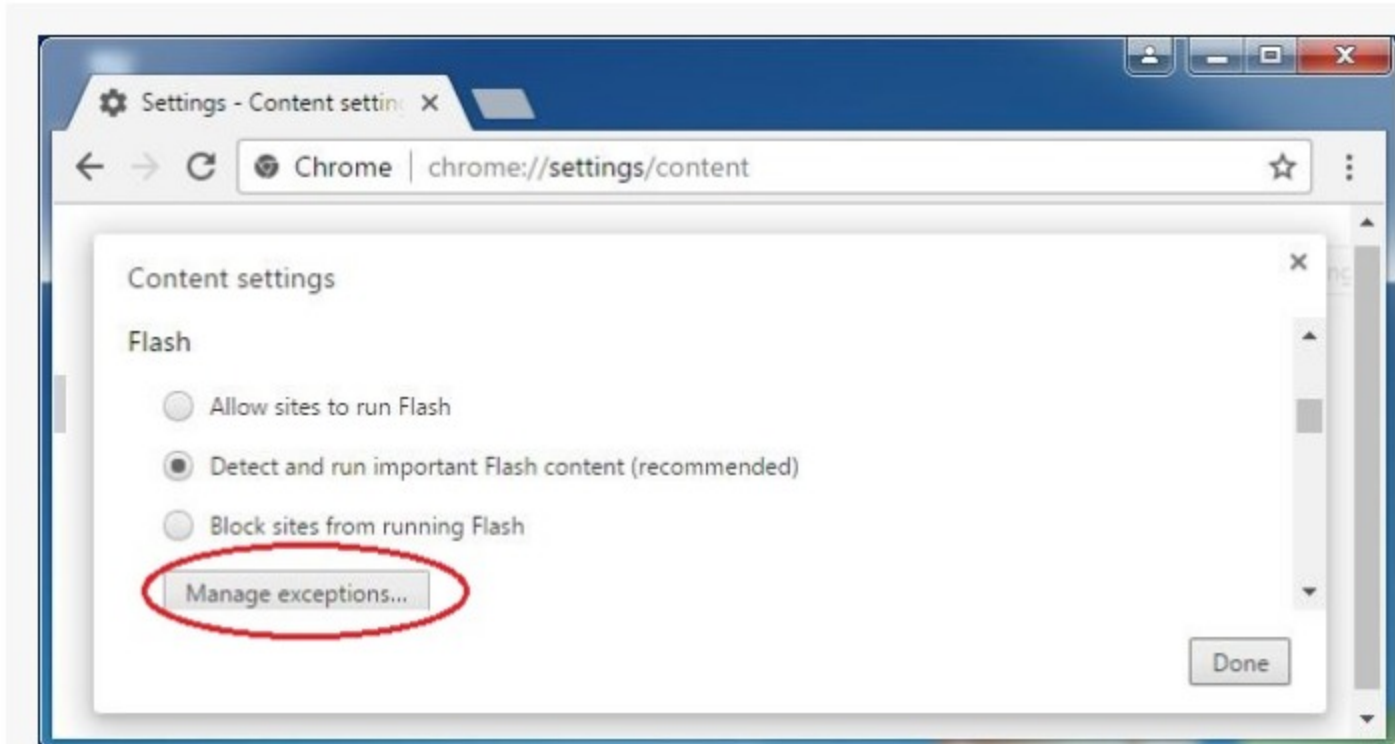
The **Content settings** screen

3 Select **Allow sites to run Flash**, and then click **Done**.



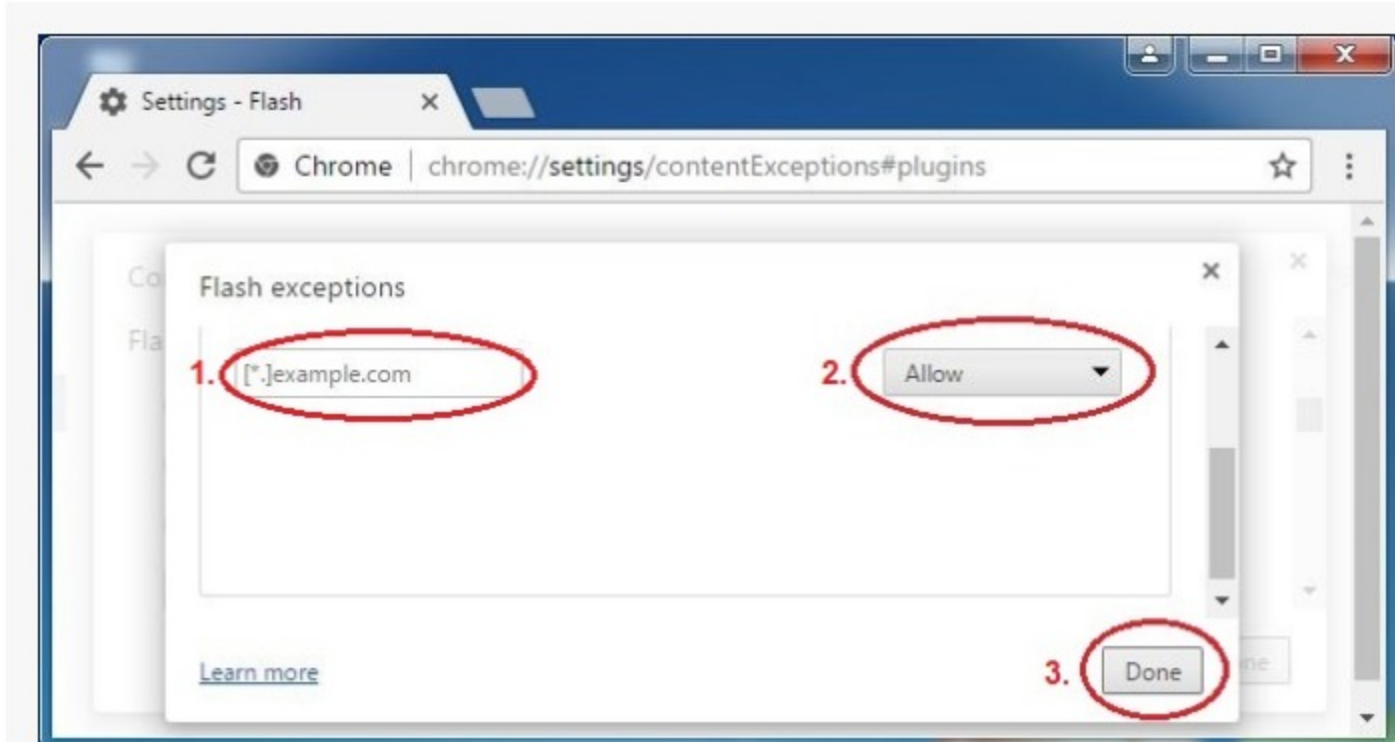
The **Flash** section of the **Content settings** screen

4 To manage Flash Player settings by site, click **Manage exceptions**.



Click **Manage exceptions** to manage **Flash Player** settings on a per-site basis

5 On the **Flash exceptions** screen, enter the website domain and then choose **Allow**. When finished adding sites, click **Done**.

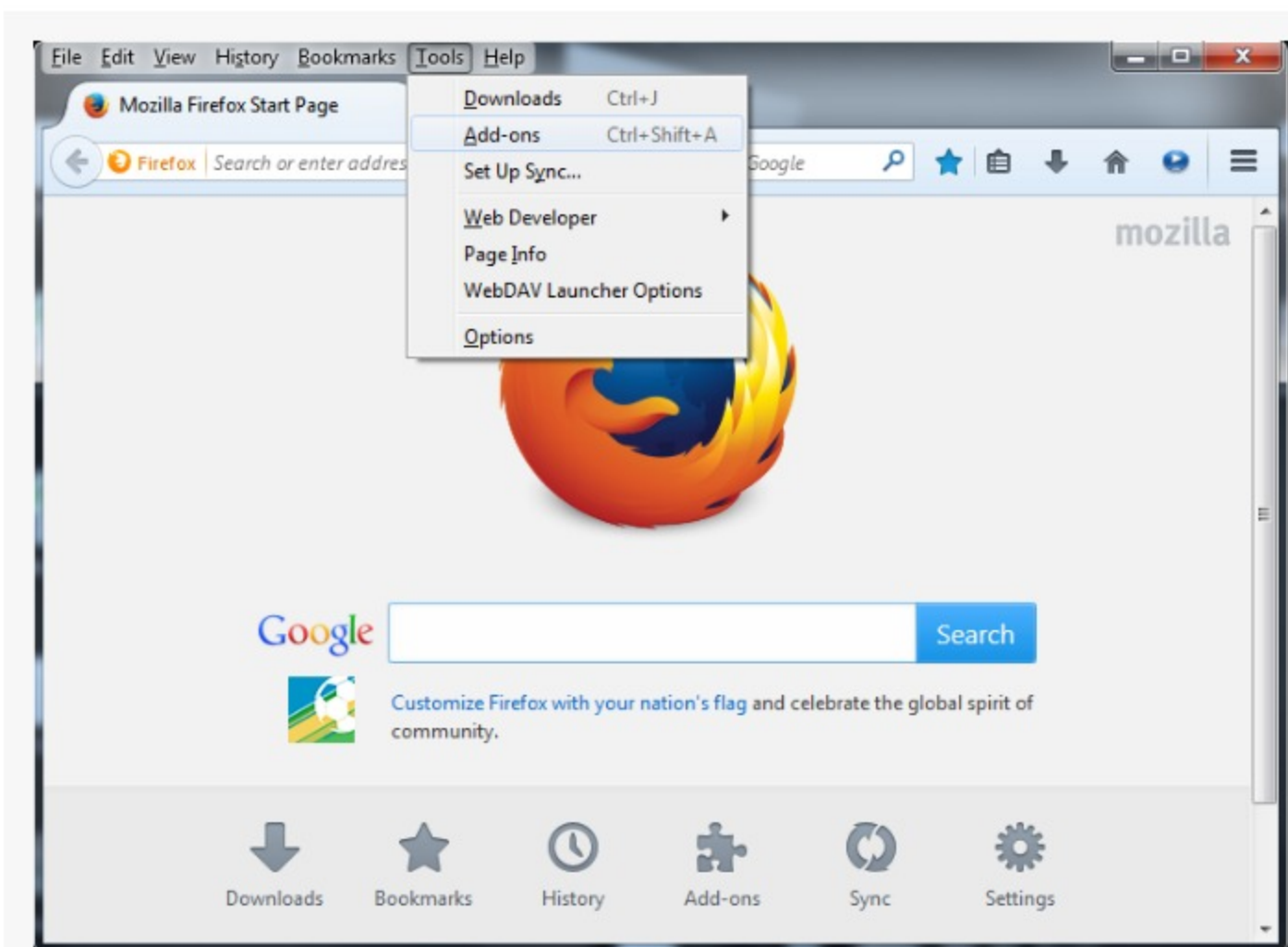


The **Flash exceptions** screen

6 Close the **Content settings** screen.

Windows

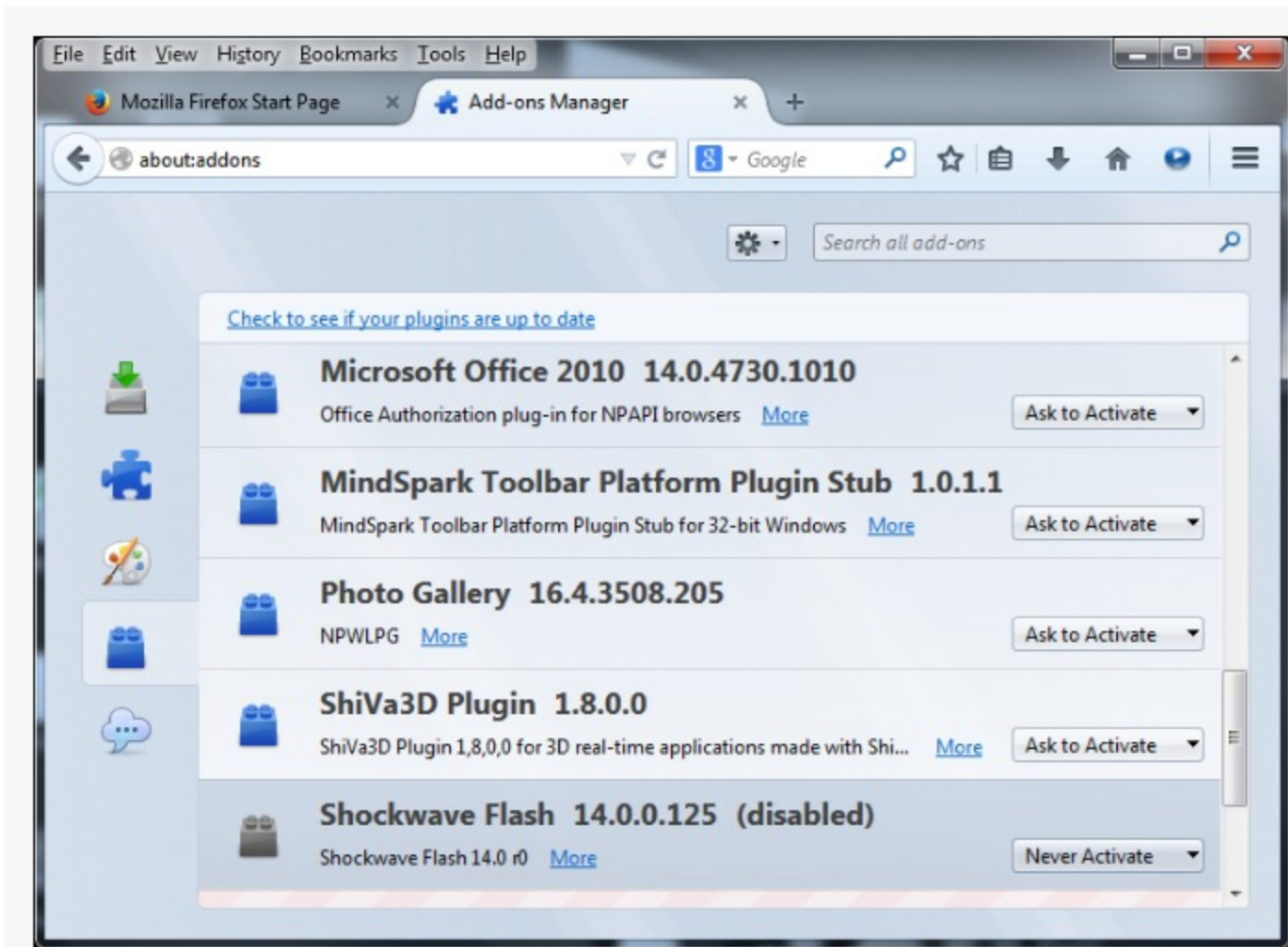
1 Choose Firefox > Tools > Add-ons.



Open the Add-ons dialog box.

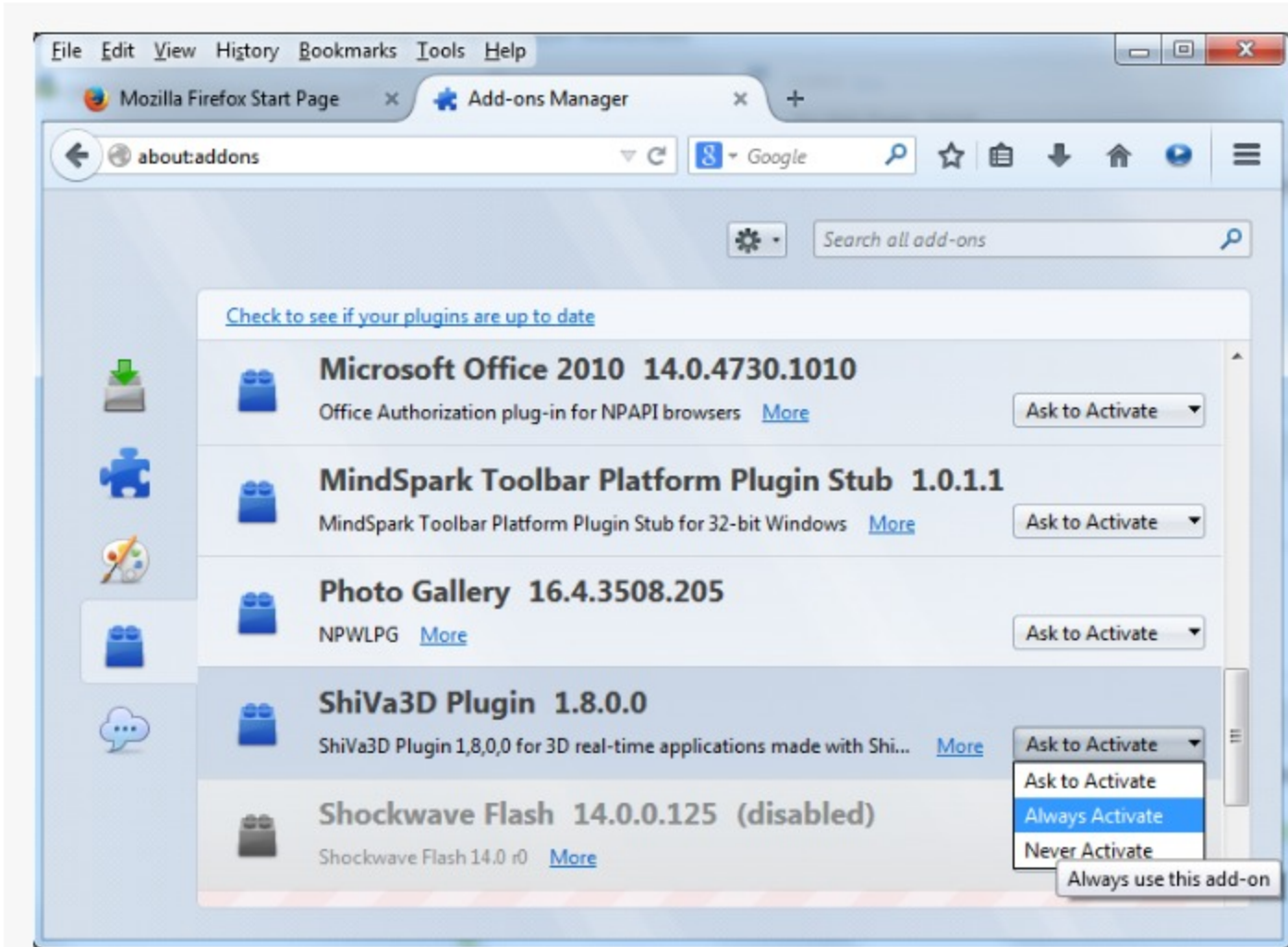
2 Select Plugins.

3 In the list of Add-ons, look for Shockwave Flash (another name for Flash Player) and check the status that appears to the right of the plug-in name.



Shockwave Flash is disabled.

4 Select Always Activate.



Enable the plug-in.

5 Close the dialog box.